

1

2

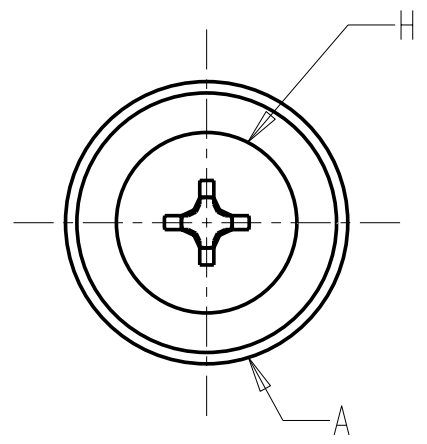
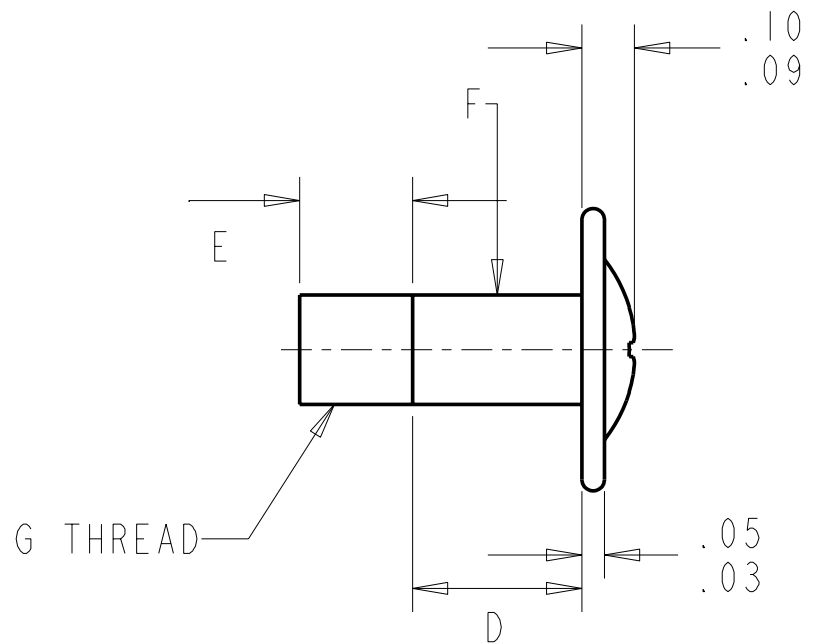
3

4

PART #	A ± .020 HEAD Ø	D ± .005 SHOULDER LENGTH	E THREAD LENGTH	F ± .0025 SHOULDER Ø	G THREAD	US ITEM CODE	ASIA ITEM CODE	H ± 0.01
SB-4102	.350	.214	.215-.185	.161	6-32 UNC-2A	693-4102	693-4102LT	0.22
SB-4105	.350	.214	.150-.126	.161	M3-0.5		693-4105LT	0.22
SB-4107	.350	.214	.215-.185	.161	M3-0.5	693-4107		0.22
SB-4112	.500	.300	.215-.185	.196±0.006	6-32 UNC-2A	693-4112	693-4112LT	0.32
SB-4114	.500	.300	.215-.185	.194	M4-0.7		693-4114LT	0.32
SB-4118	.500	.250	.215-.185	.188	6-32 UNC-2A	693-4118		0.32

REVISIONS				
DRAWN	REV	DESCRIPTION	DATE	APPROVED
PAM		ORIGINAL	12-05-03	JS
PAM	A	E DIMENSION ADDED, SB-4105 WAS .215-.185	1-14-04	JS
PAM	B	M3-0.5 WAS M3, REMOVED NOTE	2-2-04	JS
PAM	C	ADDED SB-4107 & SB-4114	2-17-04	JS
PAM	D	NO CR6 NOTE ADDED	2-18-04	JS
PAM	E	.196±.006 WAS .194	7-12-04	JS
PAM	F	ITEM CODE CHANGES	6-7-05	JS
PAM	G	QC NOTE ADDED	9-1-06	JS
PAM	H	HEAD GEOMETRY BETTER DEFINED	8-15-07	JS

#2 PHILLIPS RECESS



SCALE 3.000

SCALE 3.000

UNITS IN INCH

QUALITY CONTROL: MUST COMPLY WITH E-A-R SPECIALTY COMPOSITES SUPPLIER QUALITY MANUAL REQUIREMENTS

UNLESS OTHERWISE SPECIFIED UNITS ARE: <del>MM</del> TOLERANCES ARE: <del>±0.25 MM</del> ANGLES ±1.0°		MATERIAL: LOW CARBON STEEL	E-A-R SPECIALTY COMPOSITES	
ALLOWABLE FLASH: <del>0.12 MM</del> NA	GATE: <del>±0.25 MM</del> NA	CAD MODEL:	TITLE MACHINE SCREW- PHILLIPS - WITH SHOULDER	
CALC WT	NOTES: COMMERCIAL ZINC & CLEAR CHROMATE NO HEXAVALENT CHROME TO BE USED	SIZE B	ITEM CODE	DWG NO. SB-4XXX CUSTOMER COPY

1

2

3

4