

U.S. PATENTED

IKO

C-Lube Linear Roller Way

Super MXN

*Maintenance free for
20,000 km or 5 years*

POWDER & CARBIDE

CAT-5950

See you again at
IKO Website
<http://www.ikont.co.jp/eg/>

NIPPON THOMPSON CO., LTD.

Head office : 19-19 Takanawa 2-chome Minato-ku,
Tokyo 108-8586, Japan
Phone : +81 (0)3-3448-5850
Fax : +81 (0)3-3447-7637
E-mail : ntt@ikonet.co.jp
URL : <http://www.ikont.co.jp/eg/>
Plant : Gifu, Kamakura

NIPPON THOMPSON CO., LTD.

ASEAN REPRESENTATIVE OFFICE

Level 8, #1 Silom Road, Silom,
Bangrak, Bangkok
Thailand 10500
Phone: +66 (0)-2-231-8278
Fax: +66 (0)-2-231-8121
E-mail: ntar@ikonet.co.jp

IKO-THOMPSON (SHANGHAI) LTD.

Room 23G, Zhao Feng World Trade Building
No.369, Jiang Su Road,
Changning District, Shanghai 200050,
People's Republic of China
Phone: +86 (0)21-5237-9100
Fax: +86 (0)21-5237-9095

Recognizing that conservation of the global environment is the top-priority challenge for the world's population, IKO will conduct its activities with consideration of the environment as a corporate social responsibility, reduce its negative impact on the environment, and help foster a rich global environment.

**ISO 9001 & 14001 Quality system
registration certificate**



IKO INTERNATIONAL, INC.

<http://www.ikont.com/>

East coast

91 Walsh Drive
Parsippany, NJ 07054
U.S.A.
Phone: +1 973-402-0254
Toll Free: 1-800-922-0337
Fax: +1 973-402-0441
E-mail: eco@ikonet.co.jp

Midwest

500 East Thorndale Avenue
Wood Dale, IL 60191
U.S.A.
Phone: +1 630-766-6464
Toll Free: 1-800-323-6694
Fax: +1 630-766-6869
E-mail: mwo@ikonet.co.jp

West coast

20170 South Western Avenue
Torrance, CA 90501
U.S.A.
Phone: +1 310-609-3988
Toll Free: 1-800-252-3665
Fax: +1 310-609-3916
E-mail: wco@ikonet.co.jp

Southeast

2150 Boggs Road, Suite 100
Duluth, GA 30096
U.S.A.
Phone: +1 770-418-1904
Toll Free: 1-800-874-6445
Fax: +1 770-418-9403
E-mail: seo@ikonet.co.jp

Southwest

8105 N. Beltline Road
Suite 130, Irving, TX 75063
U.S.A.
Phone: +1 972-929-1515
Toll Free: 1-800-295-7886
Fax: +1 972-915-0060
E-mail: swo@ikonet.co.jp

NIPPON THOMPSON EUROPE B.V.

<http://www.ikont.eu/>

The Netherlands

Sheffieldstraat 35-39
3047 AN Rotterdam
The Netherlands
Phone: +31 (0)10-4626868
Fax: +31 (0)10-4626099
E-mail: nte@ikonet.co.jp

Germany

Mündelheimer Weg 56
40472 Düsseldorf
Germany
Phone: +49 (0)211-414061
Fax: +49 (0)211-427693
E-mail: ntd@ikonet.co.jp

Im Gewerbepark D 30
93059 Regensburg
Germany
Phone: +49 (0)941-206070
Fax: +49 (0)941-2060719
E-mail: ntdr@iko-nt.de

Gruben Str.95c
66540 Neunkirchen
Germany
Phone: +49 (0)6821-999-860
Fax: +49 (0)6821-999-8626
E-mail: ntdn@iko-nt.de

UK

2 Vincent Avenue, Crownhill
Milton Keynes Bucks MK8 0AB
United Kingdom
Phone: +44 (0)1908-566144
Fax: +44 (0)1908-565458
E-mail: sales@iko.co.uk

Spain

Autovia Madrid-Barcelona, Km. 43,700
Polig. Ind. AIDA, A-8, Ofic. 2, 1ª
19200-Azuqueca de Henares
Guadalajara, Spain
Phone: +34 949-263390
Fax: +34 949-263113
E-mail: nts@ikonet.co.jp

France

Roissypole Le Dôme
2 rue de La Haye
BP 15950 Tremblay en France
95733 Roissy C. D. G. Cedex
France
Phone: +33 (0)1-48165739
Fax: +33 (0)1-48165746
E-mail: ntf@ikonet.co.jp

POWER & CARE

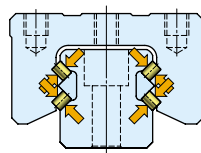
IKO

C-Lube Linear Roller Way Super MXN



POWER

- Roller Effect for Superior rigidity
- Super high load capacity
- Accurate operation and positioning



Well-balanced structure with cylindrical rollers as rolling element brings you great load capacity, very high rigidity, superior running accuracy and excellent damping characteristics. C-Lube Linear Roller Way Super MXN is the best mechanical element for machine tool applications requiring high machining accuracy under high-speed cutting, heavy cutting with vibration and shocks, and precision grinding.

Lowered center of gravity provides more stability in operation

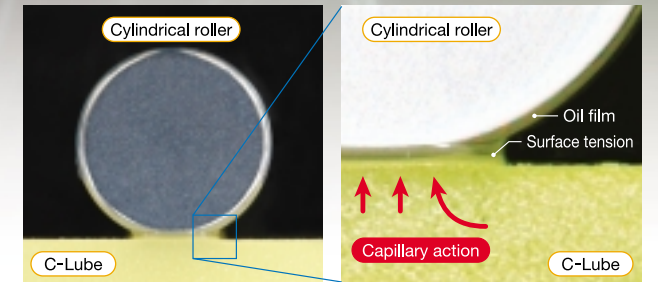
Low sectional height C-Lube Linear Roller Way Super MXN comes with flange type and block type models. Both contribute downsizing and lowering the center of gravity of the machine keeping full performances by roller effect.

Since the dimensional interchangeability to the Low section ball type linear way, accuracy, rigidity and damping characteristic of the machine can be improved greatly by just replacing to C-Lube Linear Roller Way Super MXN without any design change.

CARE

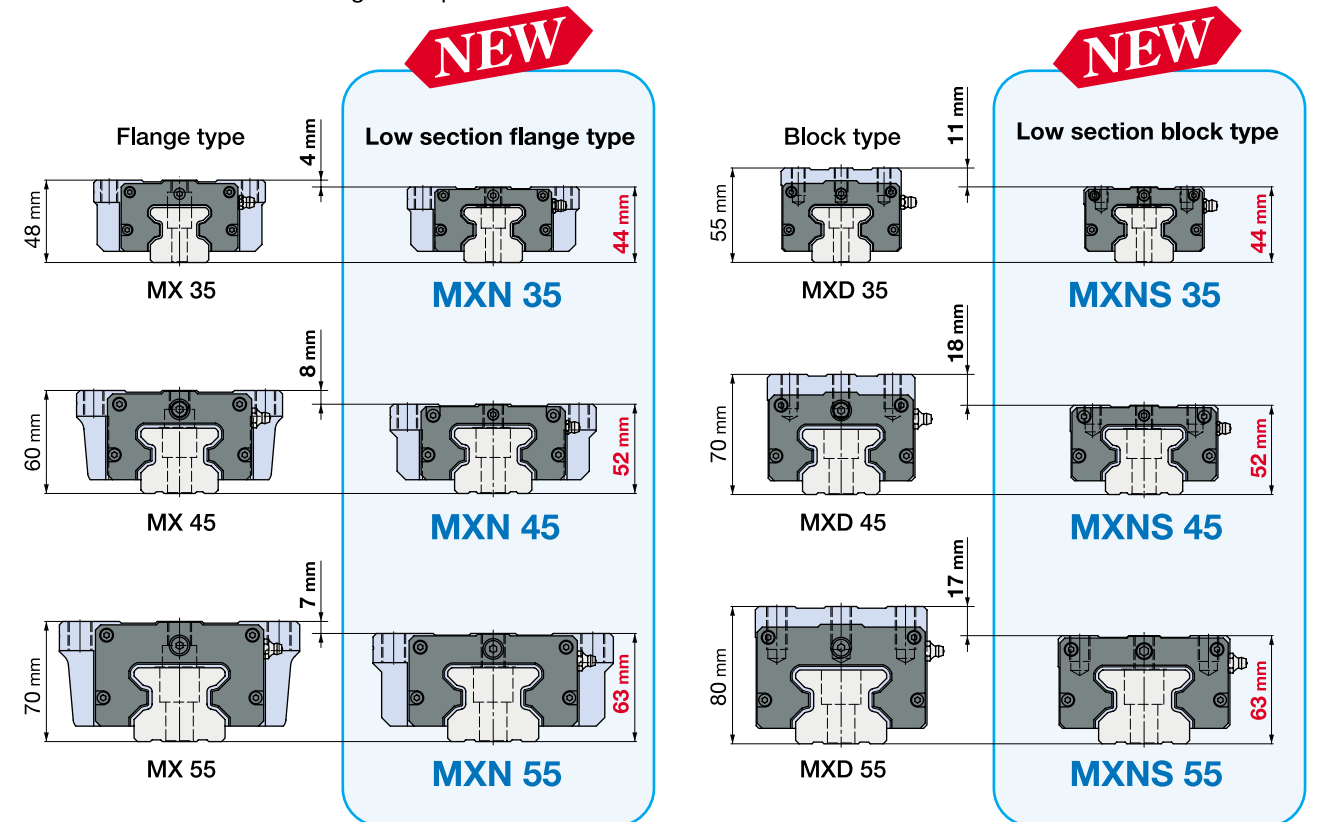
C-Lube effect for 5 years or 20,000 km of maintenance free

The surface of C-Lube is always covered with the lubricant. Lubricant is continuously supplied to the surface of cylindrical rollers by surface tension in the contact of C-Lube surface and cylindrical rollers. New oil permeates automatically from the core of C-Lube to the raceway surfaces that come in contact with cylindrical rollers.



Interchangeable

Interchangeable specification is available. Slide units and track rails can be supplied separately allowing them to be matched, replaced and added freely. This feature offers more freedom in designing machines, facilitating standardization and sudden changes of specifications.



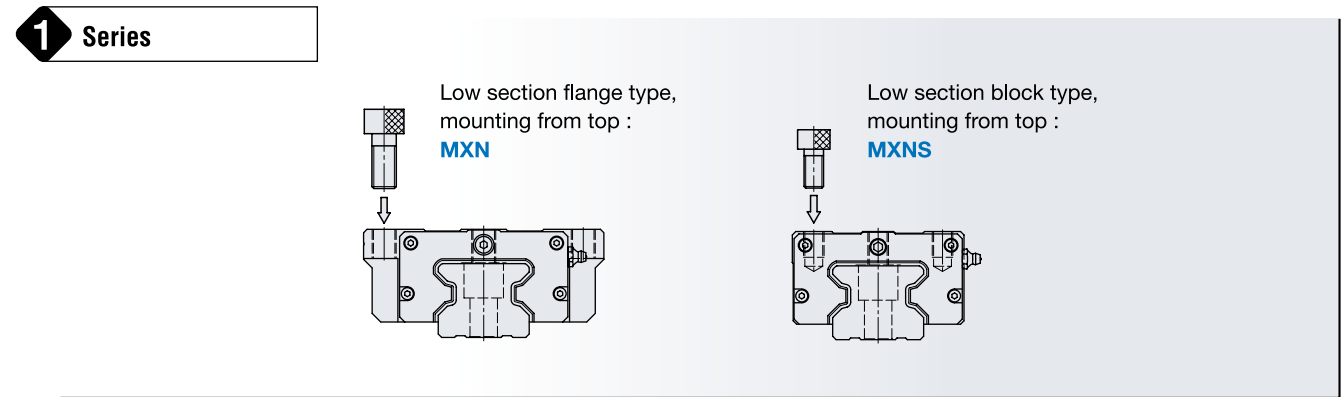
Identification number

The specification of C-Lube Linear Roller Way Super MXN is identified by the identification number, which consists of model code, size, part code, preload symbol, classification symbol, interchangeable code and optional supplemental codes.

Example of identification number

Slide unit only	MXN	G	35	C1		T₃	P	S1	/Z
Track rail only	LRX		35		R800		P	S1	/F
Slide unit and track rail matched set	MXN	G	35	C1	R800	T₃	P	S1	/FZ

- 1 Series** Model code
- 2 Length of slide unit** Size
- 3 Size of rolling guide** Part code
- 4 Number of slide unit** Preload symbol
- 5 Length of track rail** Classification symbol
- 6 Preload** Interchangeable code
- 7 Accuracy class** Supplemental code
- 8 Interchangeable**
- 9 Optional specification**



- 2 Length of slide unit**
 - Standard : No symbol
 - High rigidity long : G
- 3 Size of rolling guide**
 - 35, 45, 55
- 4 Number of slide unit and track rail**
 - Set product (with track rail) : C○ (Ex: MXN35C2R220H)
 - Slide unit only (Interchangeable series) : C1 (Ex: MXN35C1HS2)

For an assembled set, indicates the number of slide units assembled on one track rail. For an interchangeable slide unit only, "C1" can be indicated.
- 5 Length of track rail**
 - Set product (with slide unit) : R○ (Ex:MXN35C2R220H)
 - Track rail only (Interchangeable series) : No symbol (Ex:MXN35R220H2)

Indicate the length of track rail in mm.
- 6 Preload**
 - Standard : No symbol ⁽¹⁾
 - Light preload : T₁ ⁽¹⁾
 - Medium preload : T₂
 - Heavy preload : T₃

Specify this items for an assembled set or an interchangeable single slide unit.

Note (1) : Not applicable to interchangeable specification.
- 7 Accuracy code**
 - High class : H
 - Precision class : P
 - Super precision class : SP
 - Ultra precision class : UP

Super precision class (SP) and Ultra precision class (UP) are applicable to Non-interchangeable products only. In the interchangeable specification, please combine the same accuracy codes on both slide unit and track rail.
- 8 Interchangeable specification**
 - Interchangeable : S2

In C-Lube Linear Roller Way, slide unit and track rail can be supplied separately by indicating interchangeable code S2.
- 9 Optional specifications**
 - /A, /D, /E, /F, /HP, /I, /JO, /LO, /LFO, /MA, /RC○, /T, /UR, /VO, /WO, /ZO

Applicable optional specifications are shown in Table 1. When a combination of several special specifications is required, arrange supplemental codes in alphabetical order.

Table 1 Applicable optional specifications

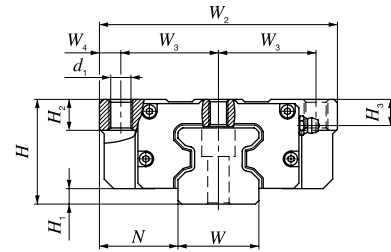
Specifications ⁽¹⁾	Supplemental code
Butt jointing track rail	/A
Opposite reference surfaces arrangement	/D
Specified rail mounting hole positions	/E
Caps for rail mounting holes	/F
Half pitch of track rail mounting holes	/HP
Append an inspection sheet	/I ⁽²⁾
Female threads for bellows	/JO
Black chrome surface treatment	/LO
Fluoric black chrome surface treatment	/LFO
With track rail mounting bolts	/MA
C-Wipers ⁽³⁾	/RC○
Butt-jointing interchangeable track rail	/T
Inner Seals	/UR
Double end seals	/VO
Matched sets to be used as an assembled group	/WO
Scrapers	/ZO

Note (1) : In detail of optional specification, refer to CAT-57153 and/or CAT-5507.
 (2) : Not applicable to interchangeable specification.
 (3) : In case /RC(O) is selected, inner seal and scraper are automatically assembled. Indicating /UR and /Z is unnecessary.

IKO C-Lube Linear Roller Way Super MXN

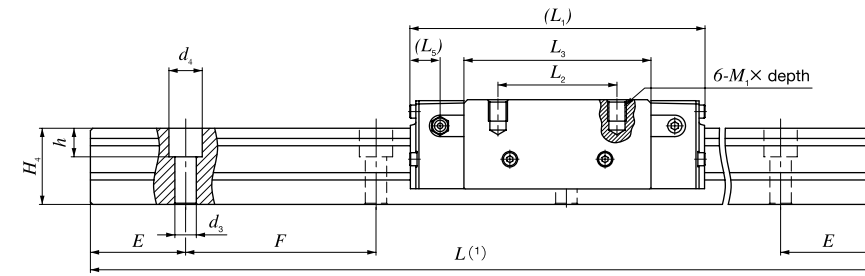
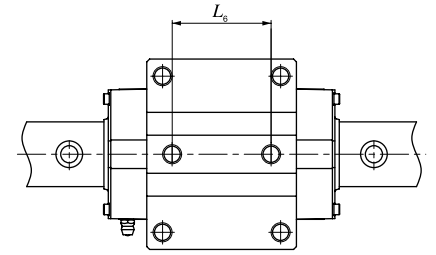
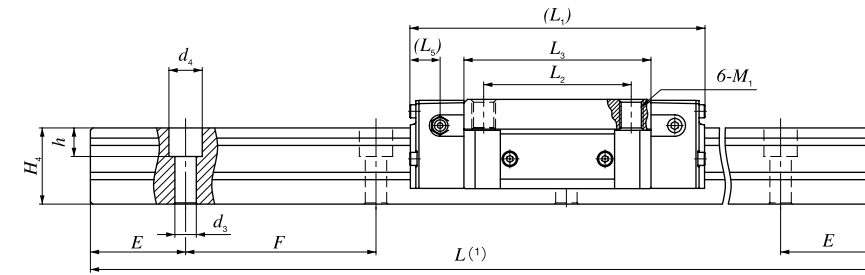
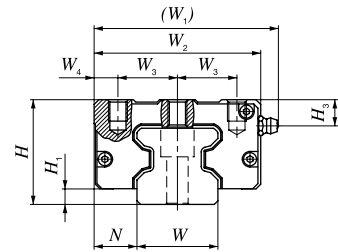
Low section flange type, mounting from top

Standard : MXN
High rigidity long : MXNG



Low section block type, mounting from top

Standard : MXNS
High rigidity long : MXNSG



Model number	Mass (Reference)		Dimension of assembly mm		Dimension of slide unit mm													Dimension of track rail mm						Recommended ⁽⁴⁾ mounting bolt for track rail mm Bolt size x length	Basic ⁽⁵⁾ dynamic load rating C N	Basic ⁽⁵⁾ static load rating C ₀ N	Static moment rating ⁽⁵⁾																				
	Slide unit kg	Track rail kg/m	H	H ₁	N	W ₁	W ₂	W ₃	W ₄	L ₁	L ₂	L ₃	L ₅	L ₆	d ₁ ⁽²⁾	M ₁ x depth	Maximum screwing depth ⁽³⁾	H ₂	H ₃	W	H ₄	d ₃	d ₄				h	E	F	T ₀ N·m	T _x N·m	T _y N·m															
MXN 35	1.55	6.88	44	6.5	33	-	100	41	9	124	62	78.6	12.7	52	8.5	M10	11	13	11	34	32	9	14	12	40	80	M 8 x 35	58 700	100 000	2 170	1 360 / 8 470	1 360 / 8 470															
MXNG 35	2.13				152	106.6	124	50	78.6	124	50	78.6		124	50	78.6		124										50	78.6	124	50	78.6	124	50	78.6	124	50	78.6	124	50	78.6	124	50	78.6	124	50	78.6
MXNS 35	1.08				18	80	70	25	10	124	50	78.6		124	50	78.6		124										50	78.6	124	50	78.6	124	50	78.6	124	50	78.6	124	50	78.6	124	50	78.6	124	50	78.6
MXNSG 35	1.42				152	106.6	124	50	78.6	124	50	78.6		124	50	78.6		124										50	78.6	124	50	78.6	124	50	78.6	124	50	78.6	124	50	78.6	124	50	78.6	124	50	78.6
MXN 45	2.58	10.8	52	8	37.5	-	120	50	10	154	80	99	17.5	60	10.5	M12	13	15	13.5	45	38	14	20	17	52.5	105	M12 x 40	95 400	159 000	4 430	2 700 / 16 800	2 700 / 16 800															
MXNG 45	3.73				194	139	154	60	99	154	60	99		154	60	99		154										60	99	154	60	99	154	60	99	154	60	99	154	60	99	154	60	99	154	60	99
MXNS 45	1.84				20.5	96	86	30	13	154	60	99		154	60	99		154										60	99	154	60	99	154	60	99	154	60	99	154	60	99	154	60	99	154	60	99
MXNSG 45	2.58				194	139	154	60	99	154	60	99		154	60	99		154										60	99	154	60	99	154	60	99	154	60	99	154	60	99	154	60	99	154	60	99
MXN 55	4.61	14.1	63	9	43.5	-	140	58	12	184	95	120	20	70	12.5	M14	19	17	16	53	43	16	23	20	60	120	M14 x 45	148 000	248 000	8 040	5 040 / 31 100	5 040 / 31 100															
MXNG 55	6.94				238	174	184	75	120	184	75	120		184	75	120		184										75	120	184	75	120	184	75	120	184	75	120	184	75	120	184	75	120	184	75	120
MXNS 55	3.31				23.5	112	100	37.5	12.5	184	75	120		184	75	120		184										75	120	184	75	120	184	75	120	184	75	120	184	75	120	184	75	120	184	75	120
MXNSG 55	4.83				238	174	184	75	120	184	75	120		184	75	120		184										75	120	184	75	120	184	75	120	184	75	120	184	75	120	184	75	120	184	75	120

Note (1): Track rail length L are shown in Table 2.

(2): Not applicable to middle mounting holes of slide unit. Their mounting direction is only downward.

(3): It is recommended to secure actual screwing depth should not exceed the maximum screwing depth in the table.

(4): Track rail mounting bolts are not appended. Hexagon socket bolts of JIS B 1176 strength division 12.9 or equivalent are recommended.

(5): The directions of basic dynamic load rating (C), basic static load rating (C₀) and static moment rating (T₀, T_x and T_y) are shown in the sketches below.

The upper values in the T_x and T_y column apply to one slide unit, and the lower values apply to two units in close contact.

Remark: Female threads for grease nipple are prepared on both side faces and front face of end plate. Thread size of front face is smaller than other threads thus, please consult [IKO](#) if grease nipple for front face is required.

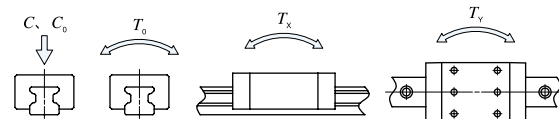


Table 2 Standard and maximum lengths of track rails

unit : mm

Item	Model number	MXN 35	MXN 45	MXN 55
Standard length L(n)		480 (6)	840 (8)	840 (7)
		640 (8)	1 050 (10)	1 200 (10)
		800 (10)	1 260 (12)	1 560 (13)
		1 040 (13)	1 470 (14)	1 920 (16)
		1 200 (15)	1 995 (19)	3 000 (25)
Mounting hole pitch F		80	105	120
E		40	52.5	60
Reference dimension E (1)	Over (Incl.)	10	12.5	15
	Under	50	65	75
Maximum length (2)		2 960 (4 000)	2 940 (3 990)	3 000 (3 960)

Note (1): Not applicable to the track rail with female threads for bellows (Supplemental code /J)

(2): The track rails can be manufactured up to the maximum length shown in parentheses. If required, please consult [IKO](#) for further information.

Remark 1: The table shows representative model numbers and is also applicable to all models in the same size.

2: In case of half pitch specification (/HP), consult [IKO](#).