

1

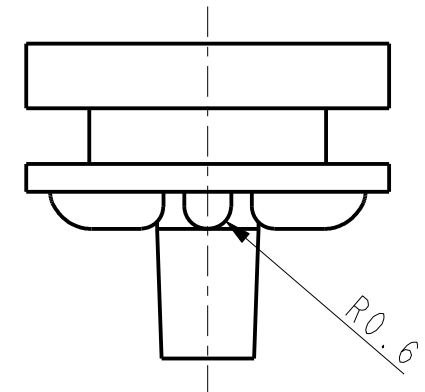
2

3

4

D

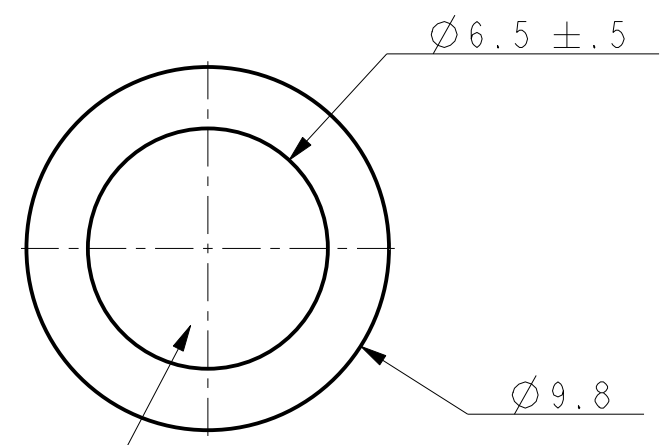
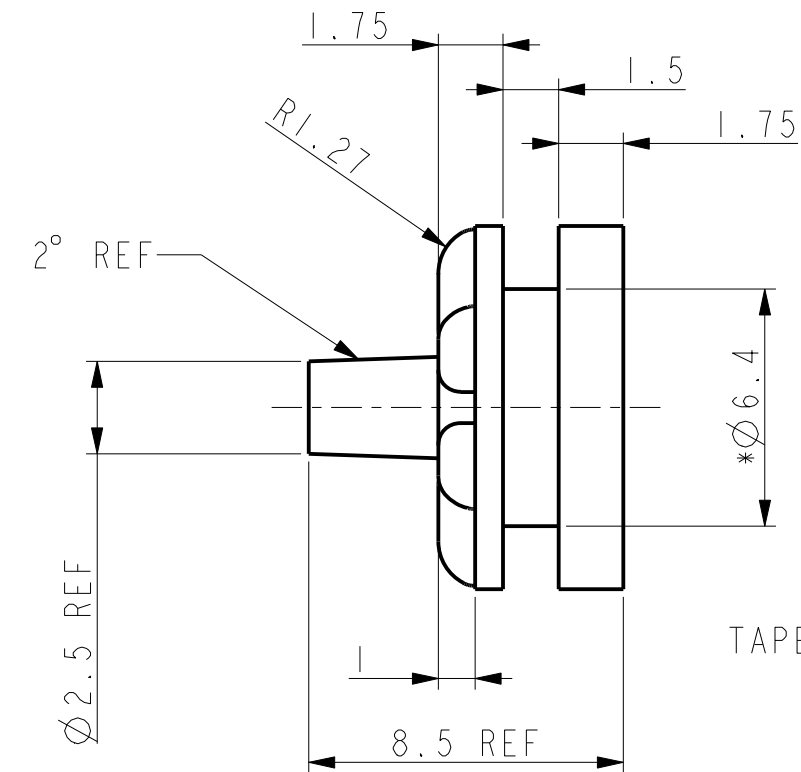
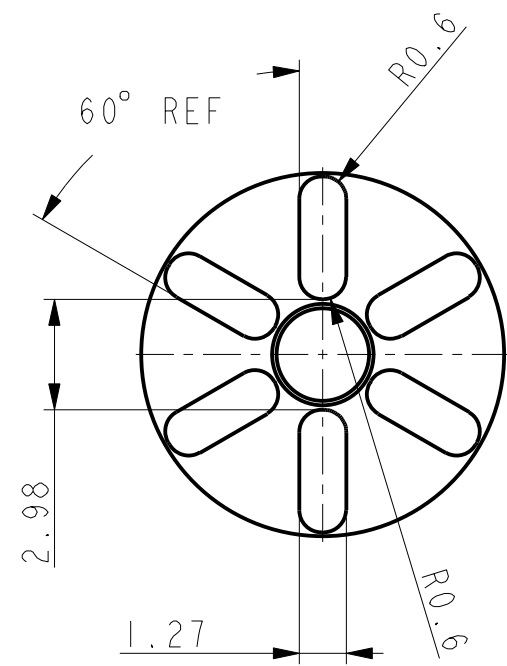
D



| REVISIONS | | | | |
|-----------|-----|---|----------|----------|
| DRAWN | REV | DESCRIPTION | DATE | APPROVED |
| PAM | | ORIGINAL | 01-06-03 | |
| PAM | A | COMPRESSION NOTE, 1.75 DIM ADDED, Ø7 WAS Ø7.2 | 01-29-03 | |
| PAM | B | MAX FLASH Ø6.5 ADDED | 01-30-03 | |
| PAM | C | C-1100 WILL BE COLORED GRAY | 02-25-03 | |
| PAM | D | ONE CRIT DIM REMOVED, 60° REF WAS 60°, Ø6.5±.5 WAS Ø7REF, C-1128 WAS C-1100 COLORED GRAY, Ø9.8 WAS Ø9.6 | 05-15-03 | DTC |
| PAM | E | PIN PUSHOUT FORCE NOTE ADDED | 06-16-03 | JAS |
| PAM | F | PUSHOUT FORCE NOTE MADE GENERIC ITEM CODE CHANGED | 05-13-04 | JAS |
| TC | 07 | UPDATED DRAWING FORMAT, ADDED C-8000 SERIES MATERIAL | 03-22-11 | MS |

C

C



TAPERED STEEL PIN: PIN6 REV D

B

B

2. REFERENCE: PIN PUSHOUT FORCE = 4LBS MIN WHEN TESTED AT 68° TO 72°F, 100 MM/MIN MINIMUM RATE WITH TYPICAL MOUNTING HOLE.

1. CRITICAL DIMENSIONS ARE MARKED WITH "*".

NOTES:

A

A

| | |
|--------------|----------|
| PG-100-C8002 | C-8002 |
| PG-100-3 | C-1128 |
| PG-100-1 | C-1002 |
| PART | MATERIAL |

| RANGE | TOL |
|------------|-------|
| 0<DIM<=2 | ±0.15 |
| 2<DIM<=25 | ±0.25 |
| 25<DIM<=50 | ±0.4 |
| 50<DIM | ±0.6 |

| |
|--|
| UNLESS OTHERWISE SPECIFIED UNITS ARE: MM (IN) TOLERANCE FOR ANGLES: ±1.0° |
| ALLOWABLE FLASH: .12 MM |
| GATE: ±.15MM |

| |
|--|
| MATERIAL: SEE TABLE |
| QUALITY CONTROL: MUST COMPLY WITH E-A-R SPECIALTY COMPOSITES SUPPLIER QUALITY MANUAL REQUIREMENTS |
| NOTES: ANY FEATURE NOT DIMENSIONED IN PRINT MUST BE VISIBLY PRESENT, UTILIZE 3D CAD FOR CREATION |

| | | |
|----------------------------|-----------------------|--------------------|
| E-A-R SPECIALTY COMPOSITES | | |
| TITLE PIN GROMMET | | |
| SIZE B | DRAWING NO. PG-100 | PAGE NO. 1 OF 1 |

1

2

3

4